

# No.600H

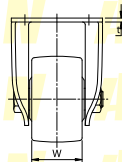
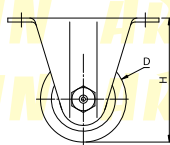
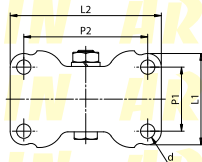
## 미들급 NBR 차륜

UCHIMURA



고정형

- [본체 재질]**  
냉간압연강판(SPCC)
- [표면 처리]**  
전기아연도금(광택크로메이트)
- [차륜 재질]**  
니트릴부타젠고무(NBR)



형식	차륜경 (D)	차륜폭 (W)	차륜취부높이 (H)	상판폭 (L1)	상판길이 (L2)	취부피치 (P1×P2)	취부구멍 (d)	상판두께 (t)	허용하중 (kg/1개)
NO.604ZH	50	28	68	50	80	36×66	6.5	2.3	85
NO.605H	63	37	91	67	111	47×91	10.5	2.9	120
NO.606H	75	37	106	72	123	52×103			150
NO.607H	100	38	130			52×103			175