

No.100HB

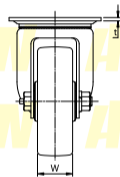
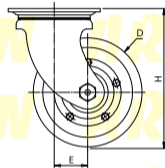
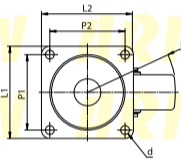
미들급 롤러베어링 NBR 차륜

UCHIMURA



회전형

- 【본체 재질】**
냉간압연강판(SPCC)
- 【표면 처리】**
전기아연도금(광택크로메이트)
- 【차륜 재질】**
니트릴부타젠 고무(NBR)



형식	차륜경 (D)	차륜폭 (W)	선회반경 (r)	편심거리 (E)	차륜취부높이 (H)	상판치수 (L1×L2)	취부피치 (P1×P2)	취부구멍 (d)	상판두께 (t)	허용하중 (kg/1개)
NO.107ZHB	100	38	88	37	130	90×90	71×71	10.5	3.2	185
NO.108HB	130	42	106	40	165	110×110	90×90		4	230
NO.109HB	150		116		187				280	