

# No.600HB

## 미들급 롤러베어링 NBR 차륜



고정형

**【본체 재질】**

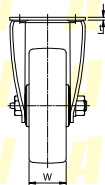
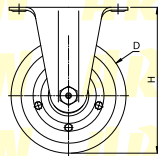
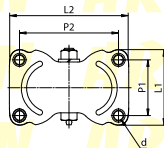
냉간압연강판(SPCC)

**【표면 처리】**

전기아연도금(광택크로메이트)

**【차륜 재질】**

니트릴부타젠 고무(NBR)



UCHIMURA

형식	차륜경 (D)	차륜폭 (W)	차륜취부높이 (H)	상판폭 (L1)	상판길이 (L2)	취부피치 (P1×P2)	취부구멍 (d)	상판두께 (t)	허용하중 (kg/1개)
NO.607HB	100	38	130	72	123	52×103	10.5	2.9	185
NO.608HB	130	42	165	86	135	63×112		3.2	230
NO.609HB	150		187					280	