

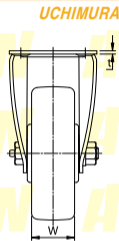
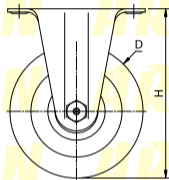
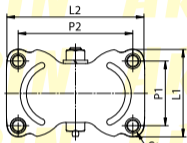
# No.600HB-P

## 헤비급 롤러베어링 페놀수지 차륜



고정형

- 【본체 재질】**  
냉간압연강판(SPCC)
- 【표면 처리】**  
전기아연도금(광택크로메이트)
- 【차륜 재질】**  
페놀수지



형식	차륜경 (D)	차륜폭 (W)	차륜취부높이 (H)	상판폭 (L1)	상판길이 (L2)	취부피치 (P1×P2)	취부구멍 (d)	상판두께 (t)	허용하중 (kg/1개)
NO.604ZH-P	50	28	68	50	80	36×66	6.5	2.3	160
NO.605HB-P	65	38	92	67	111	47×91	10.5	2.9	230
NO.606HB-P	75		106	72	123	52×103			240
NO.607HB-P	100		130	86	135	63×112			260
NO.608HB-P	130	42	165	86	135	63×112	3.2	3.2	350
NO.609HB-P	150	45	187						450