

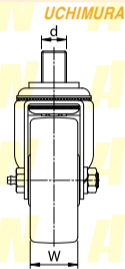
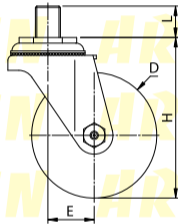
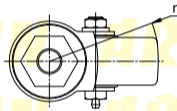
No.300HB-P

헤비급 롤러베어링 페놀수지 차륜



볼트형

- 【본체 재질】
냉간압연강판(SPCC)
- 【표면 처리】
전기아연도금(광택크로메이트)
- 【차륜 재질】
페놀수지



형식	차륜경 (D)	차륜폭 (W)	선회반경 (r)	편심거리 (E)	차륜취부높이 (H)	취부주축높이 (L)	취부주축경 (d)	허용하중 (kg/1개)
NO.305HB-P	65	38	70	36	90	25	M20 P2.5	150
NO.306HB-P	75		75		104			160
NO.307HB-P	100		88	37	128			180