

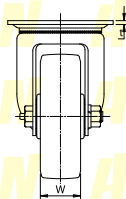
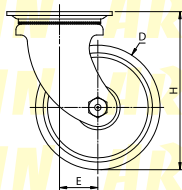
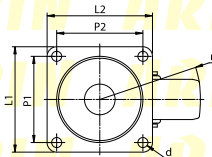
# No.100HB-PA

## 헤비급 롤러베어링 폴리우레탄 차륜

UCHIMURA



- 【본체 재질】**  
냉간압연강판(SPCC)
- 【표면 처리】**  
전기아연도금(광택크로메이트)
- 【차륜 재질】**  
폴리우레탄(PA)



회전형

형식	차륜경 (D)	차륜폭 (W)	선회반경 (r)	편심거리 (E)	차륜취부높이 (H)	상판치수 (L1×L2)	취부피치 (P1×P2)	취부구멍 (d)	상판두께 (t)	허용하중 (kg/1개)
NO.107HB-PA	100	38	72	22	130	90×90	71×71	10.5	3.2	260
NO.108HB-PA	130	42	105	40	165	110×110	90×90		4	350
NO.109HB-PA	150	45	116		187					450