

No.600HB-PA

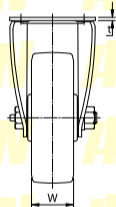
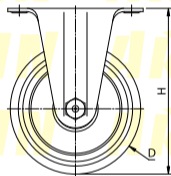
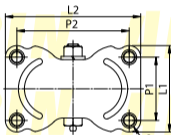
헤비급 롤러베어링 폴리우레탄 차륜

UCHIMURA



고정형

- 【본체 재질】**
냉간압연강판(SPCC)
- 【표면 처리】**
전기아연도금(광택크로메이트)
- 【차륜 재질】**
폴리우레탄(PA)



형식	차륜경 (D)	차륜폭 (W)	차륜취부높이 (H)	상판폭 (L1)	상판길이 (L2)	취부피치 (P1×P2)	취부구멍 (d)	상판두께 (t)	허용하중 (kg/1개)
NO.607HB-PA	100	38	130	72	123	52×103	10.5	2.9	260
NO.608HB-PA	130	42	165	86	135	63×112		3.2	350
NO.609HB-PA	150	45	187					450	