

No.100WHB-P

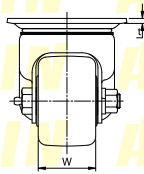
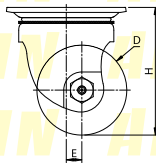
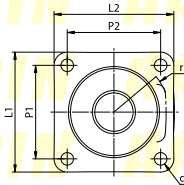
수퍼헤비급 롤러베어링 페놀수지 차륜

UCHIMURA



회전형

- 【본체 재질】**
냉간압연강판(SPCC)
- 【표면 처리】**
전기아연도금(광택크로메이트)
- 【차륜 재질】**
페놀수지



형식	차륜경 (D)	차륜폭 (W)	선회반경 (r)	편심거리 (E)	차륜취부높이 (H)	상판치수 (L1×L2)	취부피치 (P1×P2)	취부구멍 (d)	상판두께 (t)	허용하중 (kg/1개)
NO.104WHB-P	50	38	39	11	79	84×84	64×64	8.5	3.2	300
NO.105WHB-P	65	48	48	13	97	100×100	78×78	10.5	4	400
NO.106WHB-P	75		54		107					500