

No.600X-N

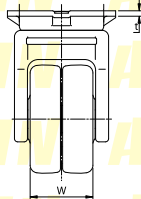
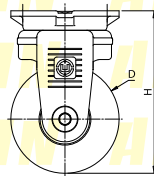
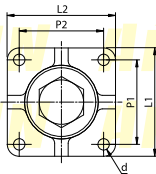
수퍼헤비급 래디얼베어링 폴리아미드 쌍차륜

UCHIMURA



고정형

- 【본체 재질】**
알미늄다이캐스트(ADC12)
- 【취부판 재질】**
열간압연강판(SAPH400)
- 【표면 처리】**
전착도장
- 【차륜 재질】**
폴리아미드수지(나일론6)



형식	차륜경 (D)	차륜폭 (W)	차륜취부높이 (H)	상판치수 (L1×L2)	취부피치 (P1×P2)	취부구멍 (d)	상판두께 (t)	허용하중 (kg/1개)
NO.604X-N	50	39	100	84×84	64×64	8.5	5	300
NO.605X-N	65	48	115					400
NO.606X-N	75		130	100×100	78×78	10.5		500
NO.607X-N	100	150	600					
NO.609X-N	150	220	800					