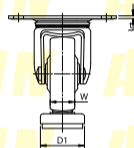
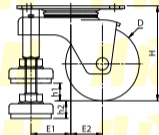
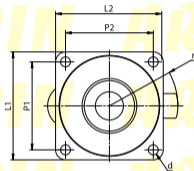


No.100AF

높이조절좌 부착 캐스터



- 【본체 재질】**
냉간압연강판(SPCC)
- 【표면 처리】**
검정색아연도금
- 【차륜 재질】**
니트릴부타젠 고무(NBR)



UCHIMURA

회전형

형식	차륜경 (D)	차륜폭 (W)	선회반경 (r)	편심거리		차륜취부높이 (H)	상판치수 (L1×L2)	취부피치 (P1×P2)	취부구멍 (d)	조절푸트외경 (D1)	조절양		조절 나사	상판두께 (t)	허용하중 (kg/1개)
				E1	E2						h1	h2			
NO.103AF	50	20	46	19	27.5	65	78×78	64×64	6.5	37.7	10	10	M10	2	50
NO.105AF	63	21	59	27	34	81	92×92	75×75	8.5		15	15		2.3	60