

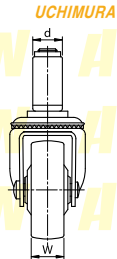
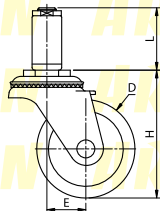
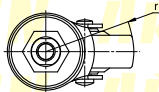
# No.200E

## 정전기방지 NRB 차륜



캐스크형

- 【본체 재질】**  
냉간압연강판(SPCC)
- 【표면 처리】**  
전기아연도금(광택크로메이트)
- 【차륜 재질】**  
니트릴부타젠 고무(NBR)



UCHIMURA

형식	차륜경 (D)	차륜폭 (W)	선회반경 (r)	편심거리 (E)	차륜취부높이 (H)	취부주축높이 (L)	취부주축경 (d)	허용하중 (kg/1개)
NO.203E	50	20	44	19	66	36	16 · 19 · 21	20
NO.205E	63	21	57	25	82	40	19 · 21	30
NO.206E	75		63		35			
NO.207E	100	22	83	33	124	50		45
NO.208E	130	25	101	36	151		80	