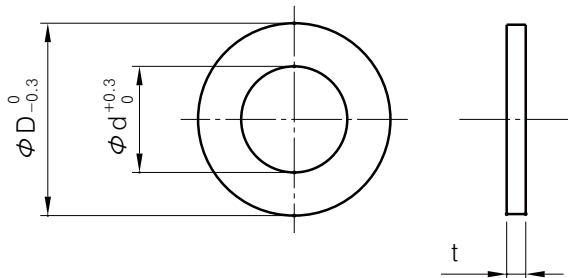
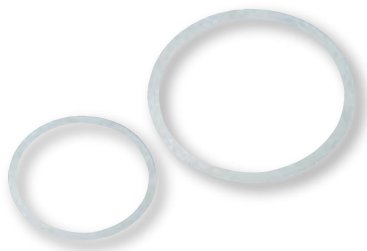


RS

베어링용 심링(내륜용)



재질 치수표(재질 · 판 두께 · 판 두께 공차)

재질	판 두께 (mm)					
	t0.05	t0.1	t0.2	t0.3	t0.5	t1.0
스테인레스(SUS304)	±0.005	±0.02	±0.03	±0.035	±0.04	±0.05

대응 베어링	내경 d(mm)	외경 D(mm)	수량	판 두께 (mm)			
				t0.05	t0.1	t0.2	t0.3
				품번	품번	품번	품번
6000 6800 6900	10	14	10	RS010014005	RS010014010	RS010014020	RS010014030
6200 6300	10	16	10	RS010016005	RS010016010	RS010016020	RS010016030
6001 6801 6901	12	16	10	RS012016005	RS012016010	RS012016020	RS012016030
6201 6301	12	18	10	RS012018005	RS012018010	RS012018020	RS012018030
6002 6802 6902	15	18	10	RS015018005	RS015018010	RS015018020	RS015018030
6202 6302	15	21	10	RS015021005	RS015021010	RS015021020	RS015021030
6003 6803 6903	17	21	10	RS017021005	RS017021010	RS017021020	RS017021030
6203 6303	17	22	10	RS017022005	RS017022010	RS017022020	RS017022030
6004 6804 6904	20	24	10	RS020024005	RS020024010	RS020024020	RS020024030
6204 6304	20	28	10	RS020028005	RS020028010	RS020028020	RS020028030
6005 6205 6805 6905	25	30	10	RS025030005	RS025030010	RS025030020	RS025030030
6305	25	35	10	RS025035005	RS025035010	RS025035020	RS025035030
6006 6806 6906	30	35	10	RS030035005	RS030035010	RS030035020	RS030035030
6206 6306	30	40	10	RS030040005	RS030040010	RS030040020	RS030040030

대응 베어링	내경 d(mm)	외경 D(mm)	수량	판 두께 (mm)	
				t0.5	t1.0
				품번	품번
6000 6800 6900	10	14	10	RS010014050	RS010014100
6200 6300	10	16	10	RS010016050	RS010016100
6001 6801 6901	12	16	10	RS012016050	RS012016100
6201 6301	12	18	10	RS012018050	RS012018100
6002 6802 6902	15	18	10	RS015018050	RS015018100
6202 6302	15	21	10	RS015021050	RS015021100
6003 6803 6903	17	21	10	RS017021050	RS017021100
6203 6303	17	22	10	RS017022050	RS017022100
6004 6804 6904	20	24	10	RS020024050	RS020024100
6204 6304	20	28	10	RS020028050	RS020028100
6005 6205 6805 6905	25	30	10	RS025030050	RS025030100
6305	25	35	10	RS025035050	RS025035100
6006 6806 6906	30	35	10	RS030035050	RS030035100
6206 6306	30	40	10	RS030040050	RS030040100

■ 사용 예

